



# TOURISTIC GUIDE

## *Gardanne*

2023-2024

# ALTEO, 130 ANS À GARDANNE

## ALTEO, LEADER DANS LA PRODUCTION D'ALUMINES DE SPÉCIALITÉ DEPUIS PLUS DE 130 ANS

Notre gamme étendue d'alumines est principalement utilisée dans les **applications céramiques, réfractaires** ainsi que dans des secteurs en pleine croissance tels que la dissipation thermique et les séparateurs de batteries au lithium.

Nos équipes de R&D travaillent en étroite collaboration avec nos clients pour développer des produits innovants répondant à leurs besoins.



## ACTEUR ESSENTIEL DE L'E-MOBILITÉ

Alteo est un acteur essentiel dans le domaine de l'**e-mobilité** grâce à sa contribution significative au marché des **batteries** en plein essor. En tant qu'expert de l'alumine de spécialité, nous fournissons des produits de haute qualité pour les batteries des **véhicules électriques**, garantissant ainsi leur performance et leur fiabilité. Cela favorise l'adoption croissante de l'e-mobilité en offrant des solutions durables et respectueuses de l'environnement pour le transport.

# Summary

04	WELCOME TO GARDANNE
06	BUSINESS AND KNOW-HOW
08	TRADITIONS
09	TERROIR
11	CULTURE & HERITAGE
13	NATURE
17	THE SHOP "LA FABRIQUE DES SAUTERELLES"
19	LET US GUIDE YOU
21	EVENTS CALENDAR
22	USEFUL NUMBERS

## The Tourism Office

### OPENING HOURS :

From January to June & from September to December :

- Monday : 9am to 12.30pm
- From Tuesday to Friday : 9am to 12.30pm and 1.30pm to 5pm
- Saturday and sunday : close

In July and august :

- Monday : 9am to 12.30pm
- From Tuesday to Friday : 9am to 12.30pm and 1.30pm to 6pm
- Sunday : 9am to 12.30pm



Follow us on  
social networks :



## Access

**CAR :** Via the D6 expressway, which links up with the A51 motorway (Marseille-Aix) and the A8 motorway (Nice-Aix).

**TRAIN :** Line 12 Marseille-Aix-Pertuis - SNCF station

**BUS :**

**Pays d'Aix Mobilité lines:** 172 Fuveau-Gardanne; 290 Mimet-Aix-en-Provence; 180 Gardanne-Aix-en-Provence; 161 Trets-pôle d'activité d'Aix; 181-182-183 Gardanne urban network.

**Cartreize:** line 64 Trets-Marseille

**Réseau Varlib:** line 4002 Brignoles-Gardanne

**AIRPLANE :** Marseille-Provence airport (Marignane) 30km away (30min)

1 boulevard Bontempis - 13120 Gardanne  
+33 (0)4.42.51.02.73 - [contact@tourisme-gardanne.fr](mailto:contact@tourisme-gardanne.fr)  
[www.tourisme-gardanne.fr](http://www.tourisme-gardanne.fr) - [www.voyagezcheznous.fr](http://www.voyagezcheznous.fr)

# Gardanne

## TRADITION & KNOW-HOW

Gardanne is an amazing town from every point of view. It has a lot to offer, and it's a safe bet that it won't leave you indifferent.

Its highly **industrialized landscape** captivates your eyes at every entrance to the town. The entrepreneurial mesh is strong, with a rich industrial history and infrastructure that rivals the height of the surrounding hills and the no less majestic Mont Sainte-Victoire. What an incredible perspective, and so many stories to tell.

An **agricultural land**, an **industrial land**, a **mining land**, a **land of innovation**, Gardanne's story is told first and foremost by the people who have shaped it and made it grow.

Now home to over 22,000 inhabitants, you'll still find all the soul of a Provençal village, as recounted in the Musée Gardanne Autrefois at the foot of the Chapelle des Pénitents.

Enlivened three times a week by its **market**, a veritable meeting place in the Pays d'Aix, the main courtyards offer visitors numerous terraces and restaurants, and regularly host events and festivals.



A city of light, Gardanne boasts a history that goes back two millennia. Known for its emblematic figures such as **King René**, the **Gueydan family** and the **Forbins**, the town also stands out for the richness and diversity of its vernacular and built heritage.

Surrounded by unspoilt natural areas, Gardanne's territory is ideal for outdoor activities and discovery, thanks to the Ecomusée de la Forêt Méditerranéenne (Mediterranean Forest Ecomuseum), and boasts several hiking trails that will delight even the sportiest of travelers.

A town of character, cultivating its traditions but always ambitious and forward-looking, **Gardanne is surprising in many ways.**

# The Tourism Office

Located in the center of the «Cours» principal, the Gardanne Tourism Office is close to the shops, the town's heritage sites and the market, which is held three times a week and attracts many visitors.

The **smiling, qualified, multilingual** team will be delighted to welcome you to our modern, streamlined premises, where you can find out all you need to know about the region's tourist attractions.

Committed for the past 9 years to a genuine quality approach to welcoming the public, the Tourist Office is now marked Qualité Tourisme™, and holds the Tourisme et Handicap label for all four types of disability. These certifications are essential if we are to provide the best possible welcome to all our visitors, and offer services adapted to the needs of both visitors and Gardannais.

In line with the global need to preserve the environment, the Tourist Office has for several years been committed to sustainable development, and is involved on a daily basis in limiting energy expenditure and promoting «local consumption». The Tourist Office is also involved in various local initiatives to protect the environment and promote sustainable development.





# Business & know-how

## THE TUILERIE BOSSY

A unique historic site dedicated to **innovation, creation, restoration** and the promotion of **art and craft**.

Located within the walls of a former ceramics factory founded in 1836 between the Pays d'Aix-en-Provence and Marseille, the Tuilerie Bossy brings together fifteen highly diverse craft workshops: from ceramics to watchmaking, antique plasterwork to leatherwork, upholstery to ironwork... The «Tuilerie Bossy» is also the headquarters of the **Tuilerie Bossy - Métiers d'Art** association, which brings together all those interested in promoting arts and crafts. To this end, it organizes regular events open to all, to share its know-how with the widest possible audience, as well as exhibitions and group visits.

*Looking for a guided tour? Find out more at [www.tourisme-gardanne.fr](http://www.tourisme-gardanne.fr)*

## RIEDERER

«Chocolate gives pleasure to people. It's about sharing. Giving attention. Giving joy. It's about pleasing the senses. It's the pleasure of the eye. The taste of goodness. A taste of childhood. Delicacy and elegance.»

Since 1780, Riederer has been offering exceptional **pastries, confectionery** and **chocolates** in the Aix-en-Provence region and Marseille. Its workshops in Gardanne are the birthplace of the Trianon, the famous pastry that has made Riederer's reputation.

Long-awaited at Christmas or Easter, king of the table, refined present, gourmet pleasure, chocolate likes to take on many guises. At Riederer, mendiants and orangettes also take center stage. These are the flagship products of Provence, and are eagerly awaited by gourmets young and old. The rest of the year, the chocolate factory reinvents itself. We imagine, we create, we test, we surprise. And visit!

*Find out more at [www.riederer.fr](http://www.riederer.fr)*



## THE ALUMINA FACTORY ALTEO

Discover this Made in Gardanne industry...

Founded 120 years ago (formerly Péchiney), the Gardanne plant is the historic headquarters of **alumina production worldwide**. Specialty aluminas are part of our daily lives, as we find them in many products: tiles, sandpaper, fireproof materials, LCD TV screens & smartphones... With a strong culture of innovation, Alteo is constantly developing high-tech aluminas for products of the future, such as lithium-ion batteries for electric cars.

*Would you like to find out more about the history of this industry rooted in the town of Gardanne, and understand how alumina is produced and used in everyday life? Join one of the guided tours offered by the Tourist Office [www.tourisme-gardanne.fr](http://www.tourisme-gardanne.fr)*

## THE MALESPINE QUARRY

For over 40 years, Durance Granulats has been a benchmark in the PACA region for the production of **aggregates** for the construction industry, with over 2 million tonnes produced every year. Present at 12 sites throughout the region, it is here in the Pays d'Aix that Durance Granulats has been developing its business since 1978.

The Malespine quarry mainly produces sand, gravel, ballast and alluvial materials for industry and road works. Aggregates produced at La Malespine are also used in roadworks (sub-base and base courses). A recycling platform with a special sorting facility recycles building and civil engineering demolition materials, as well as rubble from landfill sites.

Find out more at [www.durance-granulats.fr](http://www.durance-granulats.fr)



# ZOOM

### *The Energy Path*

A brand-new hiking trail has been launched in Gardanne: the «Chemin des Energies». Created by CCSTI La Rotonde / Mines Saint-Etienne and the town of Gardanne, in partnership with local industrialists and local authorities, this trail takes you on a journey of discovery through the surprising **industrial landscapes of the Gardanne hills**.

Brochure available free of charge from the Tourist Office

# Traditions

## GARDANNE AUTREFOIS MUSEUM

The «Musée Gardanne Autrefois» plunges you into the intimate and deeply moving world of a traditional 19th-century Provencal house. Tiles, steep staircases (...) wander through this fabulous museum with its eye for detail. Farming tools, an old grocer's store, antique furniture, Provencal costumes, everyday objects – a visit to this museum brings back a taste of authenticity.

*Address: 21 rue Courbet - 13120 Gardanne - Opening hours: Wednesdays from 2pm to 5pm and 2nd Saturday of each month from 2pm to 5pm.*



## THE SAINT-VALENTIN

King René inaugurated the «Saint-Valentine» ceremony in 1473. On February 14, the lords had to designate a «valentine», who was to serve «the lady» Jeanne de Laval (King René's wife) courteously for a whole year. It was a day of celebration in Gardanne, as King René authorized the organization of a major fair. The Gardannais were delighted and adopted Saint-Valentin as the patron saint of the village. Since then, the «Saint-Valentine» Fair has been held every year.

## ZOOM

### *Guided tours of the old village*

The Tourism Office offers guided tours of the old town center, starting from the main square and from the perched site of Le Cativel. You'll learn about Gardanne's history, including the emblematic figures who have left their mark on the town, as well as its historical heritage and places not to be missed.

*Tours available July-August and all year round for groups (10 people or more).  
Information on [www.tourisme-gardanne.fr](http://www.tourisme-gardanne.fr) - 04.42.51.02.73*



# Terroir

## THE GARDANNE'S LONG BEET

« Suiram »

It's thanks to the hard work and perseverance of Gardanne farmer Claude Crudeli that the commune can boast of having seen the birth of a product of excellence on its soil, acclaimed today by the greatest chefs: **SUIRAM long beet**. Let us tell you a lovely story of tradition, a story rooted in time and reminiscent of true values: the land, heritage and transmission.

*Address: chemin du Capéou - 13120 Gardanne - Beetroot to be found at the Gardanne market on Sunday mornings.*

## THE AGRICULTURAL HIGHT SCHOOL OF VALABRE

Today, the «Lycée Agricole de Valabre» is established on the land that belonged to the Gueydan family, and especially to the Marquis and his wife. In 1882, when the Marquise de Gueydan died, she bequeathed to the town of Gardanne all the property she had inherited from her husband, but with one condition: **the obligation to found an «Agronomic Institute» in Valabre**. Today, the agricultural school has been replaced by the Lycée Agricole.

The «Lycée Agricole d'Aix-Valabre» farm produces wine for the IGP des Bouches-du-Rhône (Red, Rosé and White) and AOP Côtes de Provence (Red and Rosé) appellations, beer in collaboration with Aix-en-Provence brewer Aquae Maltae, and organically grown chickpeas and fruit juices.

*Find Lycée Agricole products in the Tourist Office store «La Fabrique des Sauterelles».*



©Antoine Olivier

## The market of Gardanne

Renowned throughout Provence, the Gardanne market stretches from boulevard Carnot to cours de la République, offering visitors a **vast choice of local produce, Provençal specialties and hand-crafts.**

*Every Wednesday, Friday and Sunday morning. Market in Biver on Thursday mornings in the parking lot opposite the church.*



## ZOOM

### *The "Foire Agricole"*

Every year in October, the «Foire Agricole» of Saint-Michel takes place on boulevard Carnot.

A major family event, this fair lets visitors discover the world of agriculture through a market of local producers, family activities, an educational farm, workshops and demonstrations of know-how.

A day dedicated to enhancing and promoting local agriculture, with the participation of numerous producers.

For further information and a detailed program, visit [www.tourisme-gardanne.fr](http://www.tourisme-gardanne.fr)



©Antoine Olivier

# Culture & heritage

## CEZANNE AND GARDANNE

Gardanne inspired the painter Paul Cezanne, who lived there from 1885 to 1886, at 27 Cours Forbin. During this period, he produced ten canvases, including a landmark work painted from La Planque, depicting the old town nestled around its bell tower. He painted two other views of the village from the **Colline des Frères**, where a discovery trail has now been laid out around the painter, from which we can admire unique views of the village.

*Want to find out more? Join one of the guided tours offered by the Tourist Office. Further information: [www.tourisme-gardanne](http://www.tourisme-gardanne)*



## MUNICIPAL EXHIBITION GALLERY

The municipal showroom presents exhibitions by artists or artists' associations. It is open both during and outside school vacations, and presents exhibitions of photography, painting and sculpture. There are around 15 exhibitions a year. For information on exhibitors and opening days and times, please consult the Gardanne website [www.ville-gardanne.fr](http://www.ville-gardanne.fr), as well as the monthly magazine «Sortir» distributed to all municipal services or available in digital version on the town's website.

*Address: 10 avenue de la Libération - 13120 Gardanne.*

*Further information: [www.ville-gardanne.fr](http://www.ville-gardanne.fr)*



## «3 CASINO» CINEMA

The 3 Casino cinema has two cinemas open all year round, offering the widest choice of programming. More than 300 different films a year, all the latest cinema releases, the best arthouse films, films from all over the world in their original version with subtitles or in French, meetings and debates with cinema professionals (directors, actors, producers...). The Festival Cinématographique d'Automne is held every year in All Saints' Day.

Address: 11, cours Forbin - 13120 Gardanne - Information 04.42.51.44.93 - [www.cinema3casino.fr](http://www.cinema3casino.fr)

## NELSON MANDELA MEDIA LIBRARY

Established in 1995, the two-storey building features a library for children and adults, a music library, a press room and a 60-seat auditorium. The multimedia area upstairs offers Internet access and free registration for discovery workshops.

Address: Boulevard Paul Cezanne - 13120 Gardanne - Information 04.42.51.15.16.  
Opening hours: Tuesday 1:00 pm - 7:00 pm, Wednesday and Saturday 10:00 am - 5:00 pm, Thursday and Friday 2:00 pm - 6:00 pm. Summer and school vacations: Tuesday, Thursday and Friday 3:00-6:00 pm, Wednesday and Saturday 10:00-1:00 pm. [www.mediatheque.ville-gardanne.fr](http://www.mediatheque.ville-gardanne.fr)

## ZOOM

### *Cezanne's path*

Located on the Colline des Frères, just a stone's throw from the town center, the Cezanne Trail lets you discover **the place where Paul Cezanne used to paint in Gardanne.**

You'll find a number of interpretive panels recounting his life in Gardanne, as well as reproductions of his paintings of the village.

Contemplate the magnificent **view over the old town center**, with Sainte-Victoire in the background.

Free access. Guided tours offered by the Tourist Office. Further information [www.tourisme-gardanne.fr](http://www.tourisme-gardanne.fr)



# Nature

## THE THREE CATIVEL MILLS

At the top of the old town, at the top of the «montée du Castrum», stand three **ancient mills**. The first, restored and accompanied by an orientation table, dates back to the 16th century. From this vantage point, you can enjoy an exceptional panoramic view of the Gardanne area. A little further along the trail, you'll discover two other mills, with their rough, wingless structure. This shady circuit is a pleasure to enjoy in summer and winter alike.

*Want to find out more? Join one of the guided tours offered by the Tourist Office. Further information: [www.tourisme-gardanne.fr](http://www.tourisme-gardanne.fr)*



## THE MEDITERRANEAN FOREST ECOMUSEUM

With 1,000 m<sup>2</sup> of exhibition space spread over 3 floors, the Écomusée de la forêt invites you to discover the **astonishing richness of the Mediterranean forest**. The mysteries of the soil, the diversity of environments, the history and fragility of our ecosystems – all these themes will be presented to you inside the museum, but also outside, on an original and educational walk along a landscaped path.

*Address: CD7 Chemin de Roman - 13120 Gardanne - Opening hours: Open 6 days a week (closed on Saturdays). During school vacations (zone B): every day except Saturday. Outside school vacation periods: Wednesdays, Sundays and public holidays (except Saturday). Museum: 9am-12.30pm 1.30pm-5.45pm - Outdoor trail: 9am-5.45pm non-stop.*



## The hiking trails

Gardanne has **4 hiking trails**, totalling almost 50 kms of paths in a preserved environment offering a palette of singular landscapes. Follow the marked trails and let yourself be charmed by the beauty of Gardanne's natural heritage.

## The hiking guide

Would you like to discover Gardanne's nature trails? Then don't hesitate to ask for the «Guide des Randonnées» at the Tourist Office. Armed with a map and the way-points for each route, you'll be able to enjoy our mountains to the full.

## Fishing

The «Bassin de Fontvenelle» is a great place for freshwater fishing. You'll also find picnic tables and plenty of free parking.

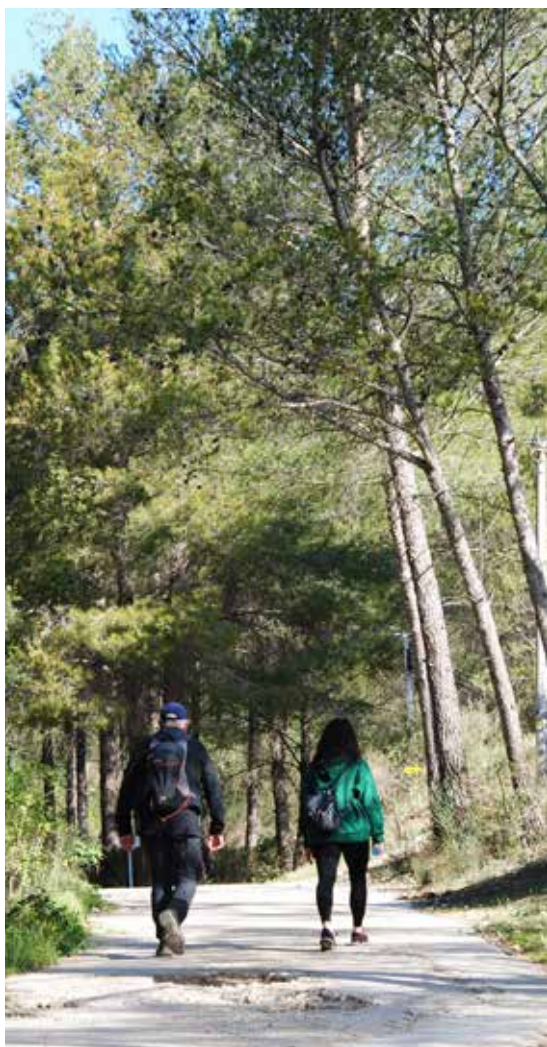
For freshwater fishing enthusiasts, compulsory fishing cards are on sale at the Tourist Office.

## Swimming pool

The Gardanne aquatic leisure center, managed by Métropole Aix-Marseille Provence, has a large 50m pool, a school pool, a paddling pool, a pentaglide, a slide and rest and play areas to delight young and old alike.

The pool is open only during the summer season, from May 30 to August 30.

Address: Avenue Léo Lagrange - 13120 Gardanne. Information: 0 810 008 060



# Connaissez-vous réellement la Société du Canal de Provence ?



## Quelle est sa mission ?

Acteur de la transition écologique, la SCP engage, depuis plus de 60 ans, sa responsabilité, son innovation et sa performance au service des territoires pour répondre aux enjeux du changement climatique dans les domaines de l'eau et des énergies renouvelables. Elle relève le challenge quotidien de sécuriser l'alimentation et l'accès en eau des territoires, contribuant ainsi à leur développement et à leur croissance économique. En tant que concessionnaire de la Région Sud, la SCP gère le patrimoine hydraulique régional exceptionnel de la concession du canal de Provence et mobilise principalement l'eau du Senson pour l'acheminement et la distribution sur l'ensemble du territoire provençal. Elle innove pour concevoir, construire et valider la conception innovante et optimiser l'optimisation de ses usages.

Pourquoi aujourd'hui, plus que jamais, il est si porteur de sens pour la Région Sud de la Provence de l'eau en Provence dans une optique de développement durable et de gestion responsable des territoires, des cultures, de l'agriculture, de l'énergie, de l'écologie, de la préservation de la ressource et des valeurs patrimoniales et touristiques.

## Qu'allez-vous découvrir lors de nos visites ?

Pousser les portes de la Société du Canal de Provence, c'est partir à la découverte de son patrimoine hydraulique exceptionnel au travers de ses ouvrages ou de son Centre de Télégésation.

C'est s'immerger dans la complexité de la gestion de l'eau en Provence et comprendre comment les différents canaux de notre région ont forgé la vision et le modèle de la gestion responsable de l'eau en Provence.

C'est plonger dans l'histoire de l'eau en Provence au travers du Domaine du Tholonet et de son riche patrimoine (le château et son parc, l'aqueduc romain, les trois anciens moulins...).

Vous êtes un visiteur individuel, vous faites partie d'un groupe ou d'une association et vous avez envie d'en apprendre plus, alors rendez-vous vite sur notre site web pour réserver votre prochaine visite.



[www.canaldeprouvence.com](http://www.canaldeprouvence.com)





## IMPRIMERIE

CRÉATION GRAPHIQUE - LOGO - MAQUETTE

- |                    |                  |                |
|--------------------|------------------|----------------|
| ● Flyer / Dépliant | ● Brochure       | ● Faire-part   |
| ● Carte de visite  | ● Étiquette      | ● Menu         |
| ● Affiche          | ● Livret de menu | ● Catalogue... |

## IMPRESSION TOUT SUPPORTS

Broderie Flocage Sérigraphie



CASQUETTE - TSHIRT - TOTE BAG - MUG

## CENTRE D'AFFAIRES

SALLE DE RÉUNION



CAPACITÉ JUSQU'À  
16 PERSONNES

DOMICILIATION



Vous disposez  
permanemment d'un  
siège social.

BUREAUX PRIVÉS



CAPACITÉ JUSQU'À  
2 À 4 PERSONNES

NOUS PROPOSONS ÉGALEMENT  
UN SERVICE DE SECRÉTARIAT

## REPROGRAPHIE

- Microfilm / Thèses ● Photocopies A4 et couleur

Tél. 04 42 51 73 50 - 06 52 50 87 50 - [ecbforbin@ecbforbin.fr](mailto:ecbforbin@ecbforbin.fr) - [www.ecbforbin.fr](http://www.ecbforbin.fr) - 3A, cours Forbin 13120 Gardanne



**BÉTON FRAIS  
EN LIBRE SERVICE  
7/7J**

**VOUS POUVEZ VOUS LA COULER DOUCE !**

[www.betoneasy.com](http://www.betoneasy.com)

La Malespine  
Route de Gréasque  
13120 Gardanne

# The shop of the Tourism Office



## "La Fabrique des Sauterelles"

The Tourist Office invites you to discover his shop of local, artisanal and quality products: «La Fabrique des Sauterelles».

La Fabrique des Sauterelles» offers a wide range of quality, short-circuit products, respecting sustainable and responsible commitments, to be enjoyed without moderation, or simply for the pleasure of giving.

You'll find the famous calissons d'Aix, crunchy cookies and navettes, delicious chocolate products, honey from three local beekeepers and homemade jams. More savoury? Our store is packed with olives and spreads, as well as wild boar terrines and olive oils. Drinks? Local beers, wines and fruit juices. You'll also find a wide range of Marseille soaps and candles in gourmet, seasonal scents.

La Fabrique des Sauterelles invites you to «travel home» and discover our delicious local produce.

The store is open at the same times as the Tourist Office.

# Ecomusée de la Forêt

**RD7 – 20 Chemin de Roman  
13120 GARDANNE**



Avec ses 1000 m2 d'expositions, l'Écomusée de la forêt vous propose de découvrir l'étonnante richesse de la forêt méditerranéenne : les mystères du sol, la diversité des milieux, l'histoire et la fragilité de nos écosystèmes...

Découvrez également son parc forestier de 13 ha, constitué de pinèdes et chênaies, grâce à un sentier jalonné de panneaux d'interprétation adaptés à tout les publics.

## Horaires d'ouverture :

Mercredi, dimanche & jours fériés (sauf samedi)\*  
9h30-12h30 & 13h30-17h45

\*Ouvert tous les jours sauf le samedi pendant les vacances scolaires (zone B)



[www.ecomusee-foret.org](http://www.ecomusee-foret.org) Tel. 04.42.65.42.10



# Semag

## 3 missions

*au service de l'intérêt général*

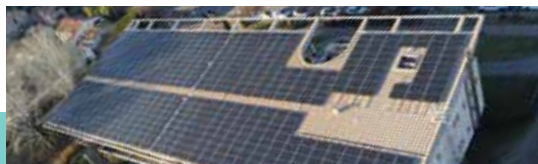
**Gestion & valorisation des déchets ultimes**  
*Exploitation de la Malespine*



**Aménagement du territoire**  
*Requalification du Pôle Yvon Morandat*



**Développement des énergies renouvelables**  
*Centrales photovoltaïques sur les bâtiments communaux*



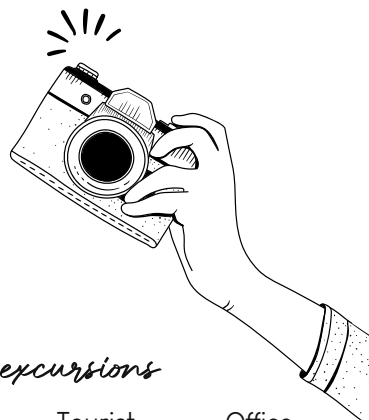


# Let us guide you

## The guided tours

Throughout the year, the Tourist Office offers guided tours of Gardanne's history and heritage, including a tour of **the old town center** and a visit to the work of painter **Paul Cezanne in Gardanne**. What's more, you'll be able to discover local know-how and businesses with an annual offer of company visits: Alteo factory, Riederer patisserie, Puits Yvon Morandat, or even Confiserie du Roy René.

Program available at the tourist office and on the website [www.tourisme-gardanne.fr](http://www.tourisme-gardanne.fr)  
Information by telephone on 04.42.51.02.73 - [contact@tourisme-gardanne.fr](mailto:contact@tourisme-gardanne.fr)



## The excursions

The Tourist Office offers a wide range of outings and excursions for the general public throughout Provence-Alpes-Côte-d'azur and beyond.

Accompanied by the Tourist Office guides, take a bus to discover the villages, museums and major events that make our beautiful Provence so special.

Find out more about the year's program at : [www.tourisme-gardanne.fr](http://www.tourisme-gardanne.fr)

# *"Voyages Chez Nous" in Pays d'Aix*

The Pays d'Aix region is rich in **history** (mining basin, parliamentary city and capital of Provence...), **cultural heritage** (Cezanne, 18 music conservatories, Lyric Art Festival since 1948, Ballet Preljocaj...) and **natural heritage** (mountains and forests). It's associated with sunshine, vineyards stretching as far as the eye can see against the backdrop of Sainte-Victoire, and the Provençal art of living. Thanks to the multiplicity of its environments, the region boasts a wide range of dual-season offerings, meeting the needs of local residents and constituting a tourist destination with multiple vocations (cultural tourism, wine tourism, business and leisure tourism, mountain tourism, sports tourism).

Pays d'Aix expresses itself beyond its aesthetic character, where everyone can feel emotions. Its towns and villages are the perfect expression of the poetry of this territory, which is inhabited, visited and attracted to us. The strong spirit of the place permeates us. Between sensibility and subjectivity, tangible and intangible, each of us carries it with us, when we grow up here, when we live here, when we come here for the first time or when we return. The Pays d'Aix has its own specificity, a singularity that means that when you're here, you're nowhere else.



## **ZOOM**

### *Voyages Chez Nous*

The «**Voyages Chez Nous**» brand is an invitation to a virtuous journey, guided by the heart and the senses. Through the blog, brochures and Instagram account, visitors will discover the Pays d'Aix, which is anything but ordinary. The territory is characterized by sublime, illustrious, protected landscapes, but also by a preserved identity. A humanity. Something different that makes it a destination.

# Events calendar

The town of Gardanne comes alive all year round with major festive events:

## *Les Indus'3days* March - April

The event dedicated to know-how tourism in Gardanne and the Aix-Marseille-Provence metropolitan area.

Program, informations and reservations in : [www.indus3days.fr](http://www.indus3days.fr)

## *Zou Mai* May

Provençal traditions and culture are showcased for a whole day in Gardanne's town center and historic center.

Program and informations in : [www.tourisme-gardanne.fr](http://www.tourisme-gardanne.fr)

## *Feu de la Saint-Jean* June

Gardans gather for traditional Midsummer bonfire.

Informations in : [www.tourisme-gardanne.fr](http://www.tourisme-gardanne.fr)

## *Arts & Festins du monde* June - July

For two days, culture, crafts and gastronomy take center stage in Gardanne. Craft stalls, world gastronomy, concerts and festive entertainment.

Informations in : [www.ville-gardanne.fr](http://www.ville-gardanne.fr)

## *Gardani' Party* July

Free festive concerts with outstanding headliners.

Informations in : [www.ville-gardanne.fr](http://www.ville-gardanne.fr)

## *Foire Agricole* October

A day dedicated to farming traditions, with educational farms, stands and participatory workshops.

Informations in : [www.ville-gardanne.fr](http://www.ville-gardanne.fr)

## *Marché de Noël* November

Big Christmas craft fair, at Halle Léo Ferré.

Program and informations in : [www.tourisme-gardanne.fr](http://www.tourisme-gardanne.fr)

# Useful numbers

**Town hall** +33 4 42 51 79 00

Opening hours:

Monday to Friday, 8:30am to 12pm and 1:30pm to 5:30pm. Saturday from 9h30 to 12h

**Annex town hall of Biver** +33 4 42 58 39 74

Opening hours:

8:30am-12pm, Monday, Wednesday and Thursday

**snCF station** 36 35

List of cabs and car parks\* available on request from the tourist office.

\*All Gardanne parking lots are free of charge or have a blue zone (except for the station parking lot).

**Fire department** 18

**Emergency medical service** 15

**Gendarmery** 17

**Local police** +33 4 42 58 34 14



**On-call pharmacy** 32 37

**Biver pharmacy** +33 4 42 51 21 62

Place de Biver

**Central pharmacy** +33 4 42 58 31 39

Centre commercial Carrefour Market, route d'Aix

**Pharmacie du Lycée** +33 4 42 51 58 16

113 avenue Pierre Brossolette

**Pharmacie du marché** +33 4 42 58 30 14

5 cours de la République

**Principal pharmacy** +33 4 42 58 34 09

2 boulevard Carnot





## PRODUCTEUR

*de vin et d'huile d'olive*

## RESTAURANT & BAR A VINS

*au coeur du vignoble*

## ACTIVITÉS

*oenotouristiques et événementielles*

Domaine Terre de Mistral

Route du Regagnas, 13790 Rousset

04 42 29 14 84 - [www.terre-de-mistral.com](http://www.terre-de-mistral.com)



Le Moulin à Olives

520 Route des Milles - 13510 Éguilles

07.49.47.52.55 - [contact@moulindeguilles.net](mailto:contact@moulindeguilles.net)

Visite guidée du Moulin, gratuite et sans inscription, tous les jours à 10h30







En reproduisant les réactions physiques à l'œuvre au cœur du Soleil et des étoiles, ITER ouvre la voie à une nouvelle source d'énergie sûre, virtuellement inépuisable et respectueuse de l'environnement.

Sans équivalent dans l'histoire, ce programme de recherche international auquel participent 35 pays (la moitié de la population mondiale) est l'aboutissement de plus de 60 ans de recherches.

La machine ITER et son infrastructure industrielle sont en cours de construction à Saint-Paul-lez-Durance (13) à une quarantaine de kilomètres au nord d'Aix-en-Provence.

Cette immense entreprise, qui se déploie sur trois continents et mobilise des milliers de personnes a ouvert depuis le printemps 2020 un chapitre majeur de son histoire : avec la finalisation des bâtiments et la livraison des principales pièces du tokamak, ITER est désormais entré dans la « phase d'assemblage », de la machine (et des défis de nature industrielle qui la caractérisent), au terme de laquelle physiciens et ingénieurs pourront engager le programme scientifique visant à démontrer la faisabilité de « l'énergie de fusion ».

ITER prépare l'avenir et agit sur le présent : le chantier, l'un des plus grands du monde, a déjà généré plus de 8,8 milliards d'euros de contrats, dont 4,2 milliards ont été attribués à des entreprises de la région.

Au total, en région Sud-Paca, plus de 7 000 emplois sont directement ou indirectement liés à ITER.